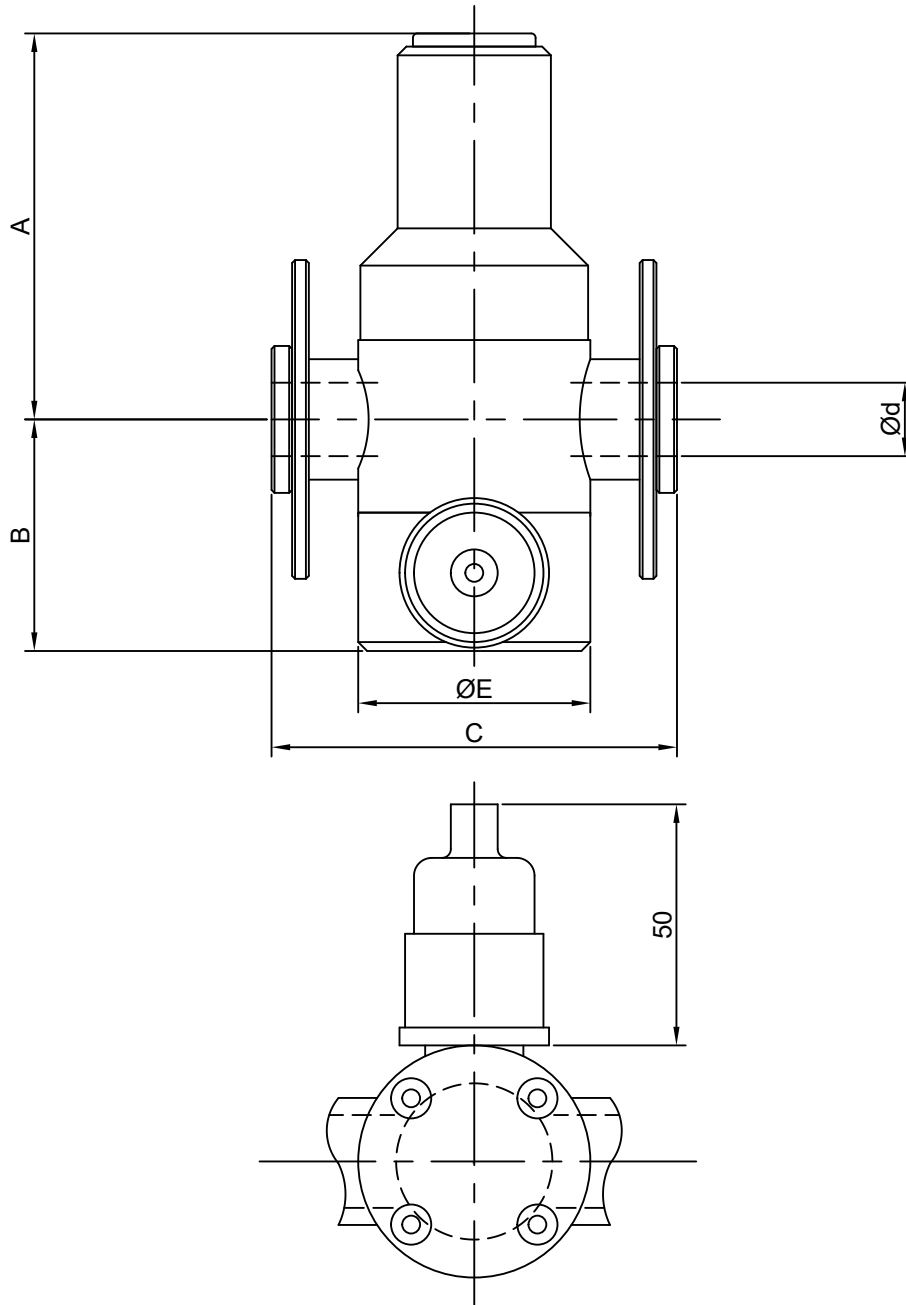


© THIS DRAWING IS THE PROPERTY OF PROCHEM SERVICES AND CANNOT BE REPRODUCED OR USED WITHOUT THE COMPANIES EXPRESS PERMISSION.

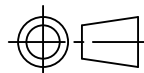


Ød			A	B	C	D	E	F
O.D	DN	NB						
16	10	3/8"	85	54	113	—	52	
20	15	1/2"	85	58	113	—	52	
25	20	3/4"	102	65	124	—	64	
32	25	1"	105	67	138	—	79	
40	32	1 1/4"	113	74	157	—	89	
50	40	1 1/2"	137	78	186	—	109	
63	50	2"	153	89	216	—	126	

VALVE SHOWN WITH PROTECTIVE BOOT IN PLACE.
 SWITCH ORIENTATION IS SUPPLIED AS SHOWN UNLESS
 OPPOSITE IS REQUESTED.
 VALVES DO NOT HAVE HOLD DOWN FIXED SCREWS IN
 THIS CONFIGURATION.
 SWITCH DIAPHRAGM HOUSING ASSEMBLY IS PVC WITH
 DIAPHRAGM MATERIAL TO MATCH VALVE DIAPHRAGM.
 FLANGES ARE LAP TYPE WITH STUB FLANGES WITH
 316L STAINLESS STEEL BACKING RINGS.
 FLANGE DRILLINGS AS PER ORDER SPECIFICATION. I.E
 ANSI/ PN.
 ALL DIMENSIONS IN MM UNLESS OTHERWISE STATED.
 TOLERANCES: ± 0.5 UNLESS STATED
 DIMENSION 'C' ± 1.00 MM

SWITCH RATING 100 VA @ 40 V MAX

PROTECTION IP65 WITH BOOT
 IP00 WITHOUT BOOT



PROCHEM SERVICES LTD CONGLETON, CHESHIRE, CW12 2AD, ENGLAND	
DRAWING No. PS/12/973	REV 0
SUBJECT 1100 SERIES OUTLINE PLASTIC CONSTRUCTION - FLANGED WITH PRESSURE SWITCH	

DRAWN	RB	DATE	10.10.12
REV		REV	
REV		REV	