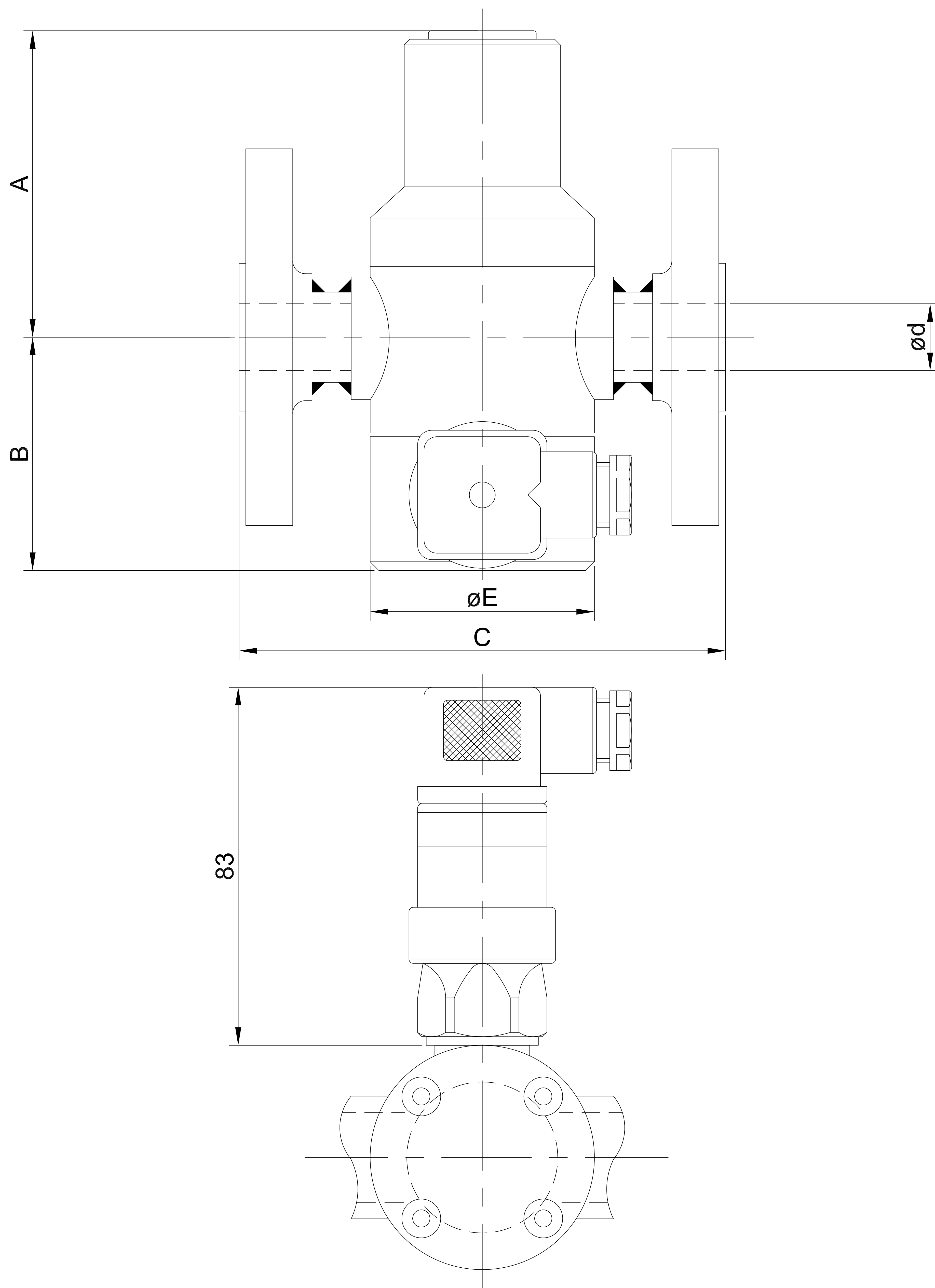


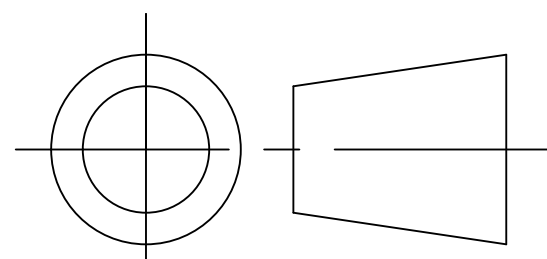
© THIS DRAWING IS THE PROPERTY OF PROCHEM SERVICES AND CANNOT BE REPRODUCED OR USED WITHOUT THE COMPANIES EXPRESS PERMISSION.



O.D	ød		A	B	C	D	E	F
	DN	NB						
16	10	3/8"	85	57	113	—	52	
20	15	1/2"	85	57	113	—	52	
25	20	3/4"	102	67	124	—	64	
32	25	1"	105	65	138	—	79	
40	32	1 1/4"	113	74	157	—	89	
50	40	1 1/2"	137	78	186	—	109	
63	50	2"	153	89	216	—	126	

PLUG POSITION SHOWN AT 90° FOR CLARITY.
 SWITCH ORIENTATION IS SUPPLIED AS SHOWN UNLESS OPPOSITE IS REQUESTED.
 VALVES DO NOT HAVE HOLD DOWN FIXED SCREWS IN THIS CONFIGURATION.
 SWITCH DIAPHRAGM HOUSING ASSEMBLY IS PVC WITH DIAPHRAGM MATERIAL TO MATCH VALVE DIAPHRAGM.
 EXOTIC METAL VALVES HAVE STUB FLANGES WITH 304 STAINLESS STEEL BACKING RINGS.
 FLANGE DRILLINGS AS PER ORDER SPECIFICATION. I.E ANSI/ PN.
 ALL DIMENSIONS IN MM UNLESS OTHERWISE STATED.
 TOLERANCES: ± 0.5 UNLESS STATED
 DIMENSION 'C' ± 1.00 MM

SWITCH RATING 250 V/4A



PROCHEM SERVICES LTD

CONGLETON, CHESHIRE, CW12 2AD, ENGLAND

DRAWING No. PS/12/972

REV 0

SUBJECT 1100 SERIES OUTLINE METAL CONSTRUCTION - FLANGED WITH DIN SWITCH

DRAWN RB DATE 10.10.12

REV REV