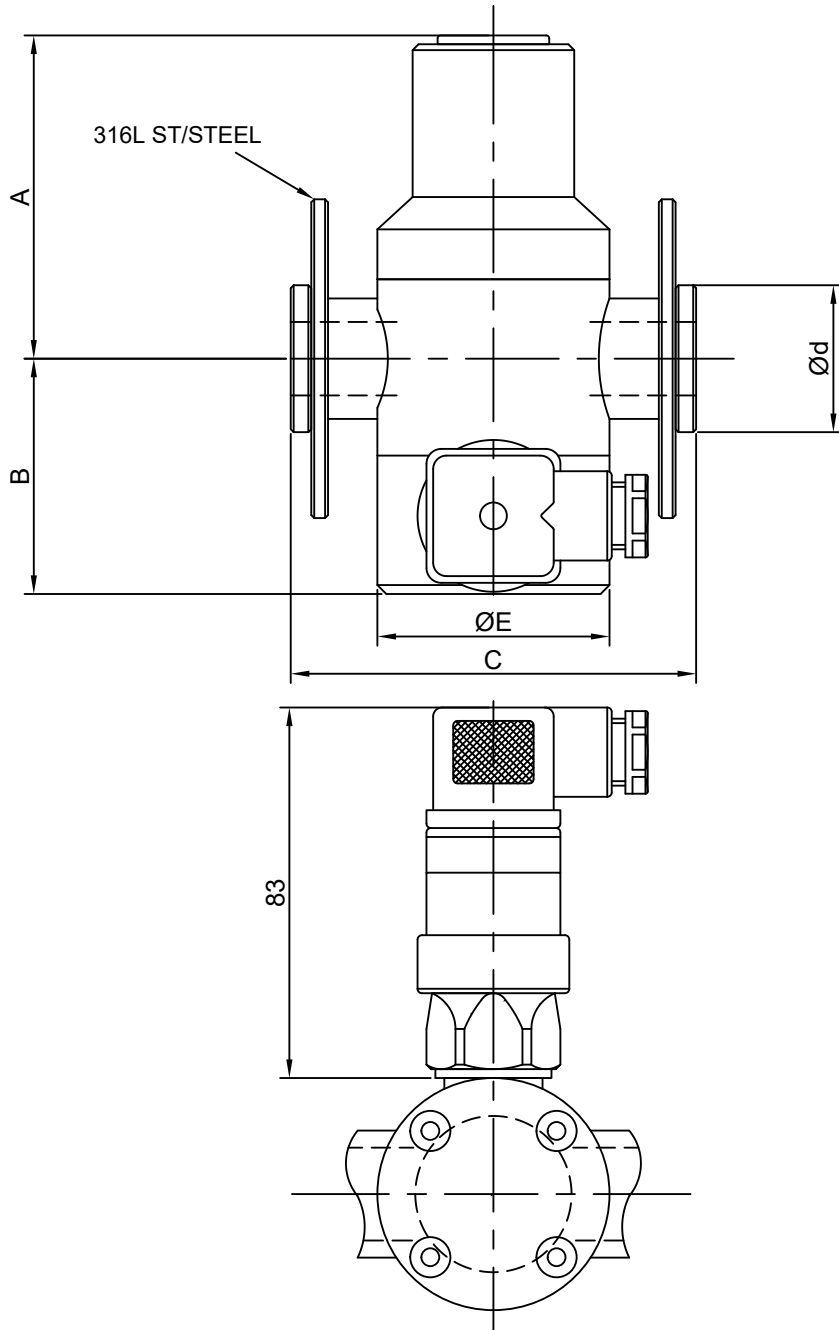


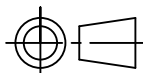
© THIS DRAWING IS THE PROPERTY OF PROCHEM SERVICES AND CANNOT BE REPRODUCED OR USED WITHOUT THE COMPANIES EXPRESS PERMISSION.



| Ød  |    |        | A   | B  | C   | D | E   | F |
|-----|----|--------|-----|----|-----|---|-----|---|
| O.D | DN | NB     |     |    |     |   |     |   |
| 16  | 10 | 3/8"   | 85  | 54 | 113 | — | 52  |   |
| 20  | 15 | 1/2"   | 85  | 58 | 113 | — | 52  |   |
| 25  | 20 | 3/4"   | 102 | 65 | 124 | — | 64  |   |
| 32  | 25 | 1"     | 105 | 67 | 138 | — | 79  |   |
| 40  | 32 | 1 1/4" | 113 | 74 | 157 | — | 89  |   |
| 50  | 40 | 1 1/2" | 137 | 78 | 186 | — | 109 |   |
| 63  | 50 | 2"     | 153 | 89 | 216 | — | 126 |   |

PLUG POSITION SHOWN AT 90° FOR CLARITY.  
 SWITCH ORIENTATION IS SUPPLIED AS SHOWN UNLESS OPPOSITE IS REQUESTED.  
 VALVES DO NOT HAVE HOLD DOWN FIXED SCREWS IN THIS CONFIGURATION.  
 SWITCH DIAPHRAGM HOUSING ASSEMBLY IS PVC WITH DIAPHRAGM MATERIAL TO MATCH VALVE DIAPHRAGM.  
 FLANGES ARE LAP TYPE WITH STUB FLANGES WITH GALVANISED STEEL BACKING RINGS.  
 FLANGE DRILLINGS AS PER ORDER SPECIFICATION. I.E ANSI/ PN.  
 ALL DIMENSIONS IN MM UNLESS OTHERWISE STATED.  
 TOLERANCES: ± 0.5 UNLESS STATED  
 DIMENSION 'C' ± 1.00 MM

SWITCH RATING 250 V/4A



|  |       |
|--|-------|
| <b>PROCHEM SERVICES LTD</b><br>CONGLETON, CHESHIRE, CW12 2AD, ENGLAND            |       |
| DRAWING No. <b>PS/12/971</b>   | REV 0 |
| SUBJECT<br>1100 SERIES OUTLINE PLASTIC<br>CONSTRUCTION - FLANGED WITH DIN SWITCH |       |

|       |    |      |          |
|-------|----|------|----------|
| DRAWN | RB | DATE | 10.10.12 |
| REV   |    | REV  |          |
| REV   |    | REV  |          |