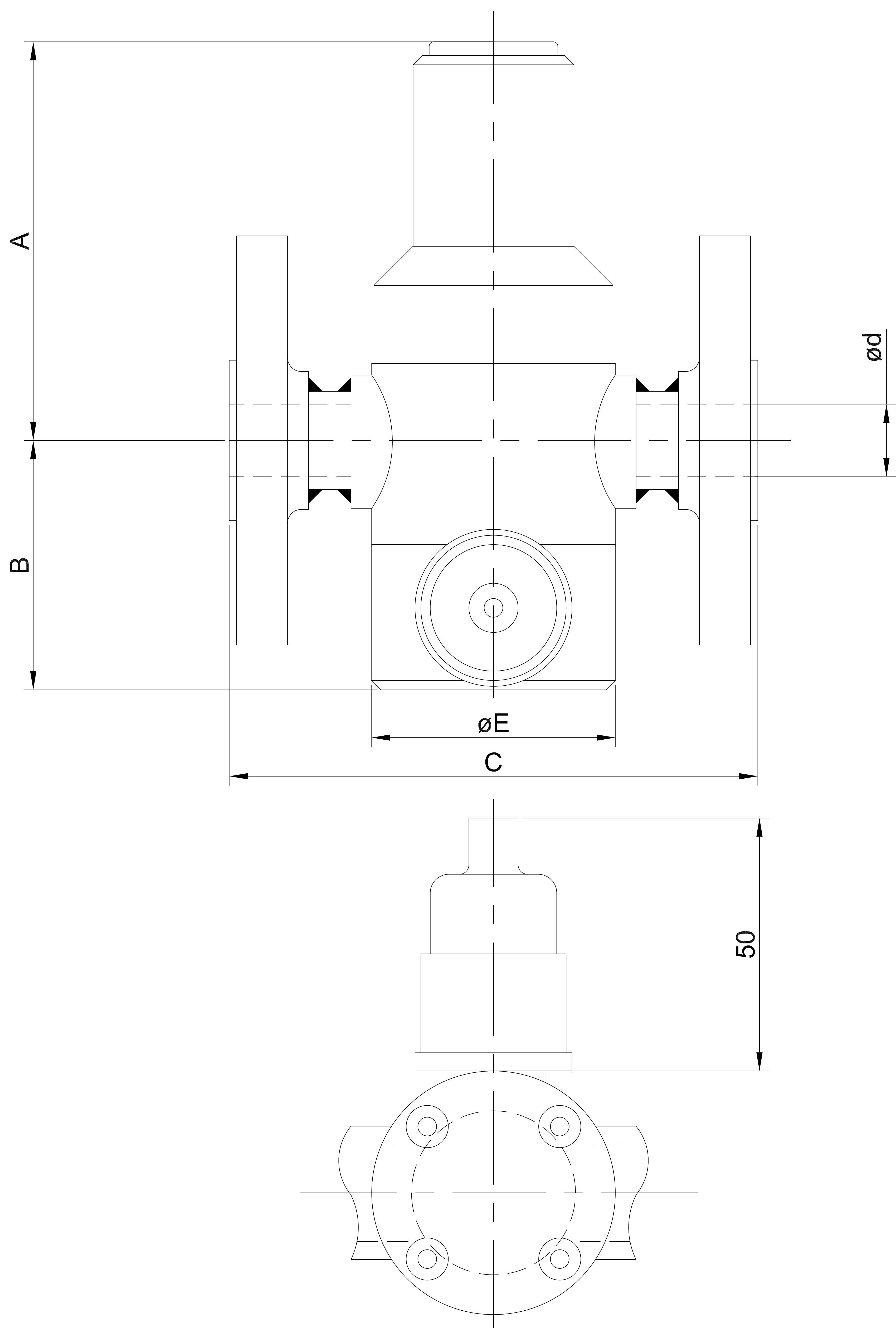


© THIS DRAWING IS THE PROPERTY OF PROCHEM SERVICES AND CANNOT BE REPRODUCED OR USED WITHOUT THE COMPANIES EXPRESS PERMISSION.

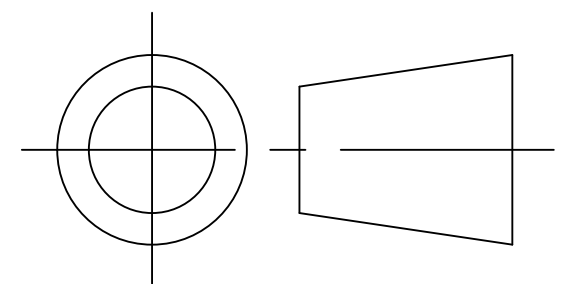


ød			A	B	C	D	E	F
O.D	DN	NB						
16	10	3/8"	85	57	113	—	52	
20	15	1/2"	85	57	113	—	52	
25	20	3/4"	102	67	124	—	64	
32	25	1"	105	65	138	—	79	
40	32	1 1/4"	113	74	157	—	89	
50	40	1 1/2"	137	78	186	—	109	
63	50	2"	153	89	216	—	126	

VALVE SHOWN WITH PROTECTIVE BOOT IN PLACE.  
 SWITCH ORIENTATION IS SUPPLIED AS SHOWN UNLESS OPPOSITE IS REQUESTED.  
 VALVES DO NOT HAVE HOLD DOWN FIXED SCREWS IN THIS CONFIGURATION.  
 SWITCH DIAPHRAGM HOUSING ASSEMBLY IS PVC WITH DIAPHRAGM MATERIAL TO MATCH VALVE DIAPHRAGM.  
 STAINLESS STEEL VALVES HAVE INTEGRAL WELDED FLANGES.  
 EXOTIC METAL VALVES HAVE STUB FLANGES WITH 304 STAINLESS STEEL BACKING RINGS.  
 FLANGE DRILLINGS AS PER ORDER SPECIFICATION. I.E ANSI/ PN.  
 ALL DIMENSIONS IN MM UNLESS OTHERWISE STATED.  
 TOLERANCES: ± 0.5 UNLESS STATED  
 DIMENSION 'C' ± 1.00 MM

SWITCH RATING 100 VA @ 40 V MAX

PROTECTION IP65 WITH BOOT  
 IP00 WITHOUT BOOT



DRAWN	RB	DATE	10.10.12
REV		REV	
REV		REV	

<b>PROCHEM SERVICES LTD</b> CONGLETON, CHESHIRE, CW12 2AD, ENGLAND	
<b>DRAWING No. PS/12/970</b>	REV 0
SUBJECT 1100 SERIES OUTLINE METAL CONSTRUCTION - FLANGED WITH PRESSURE SENSOR	