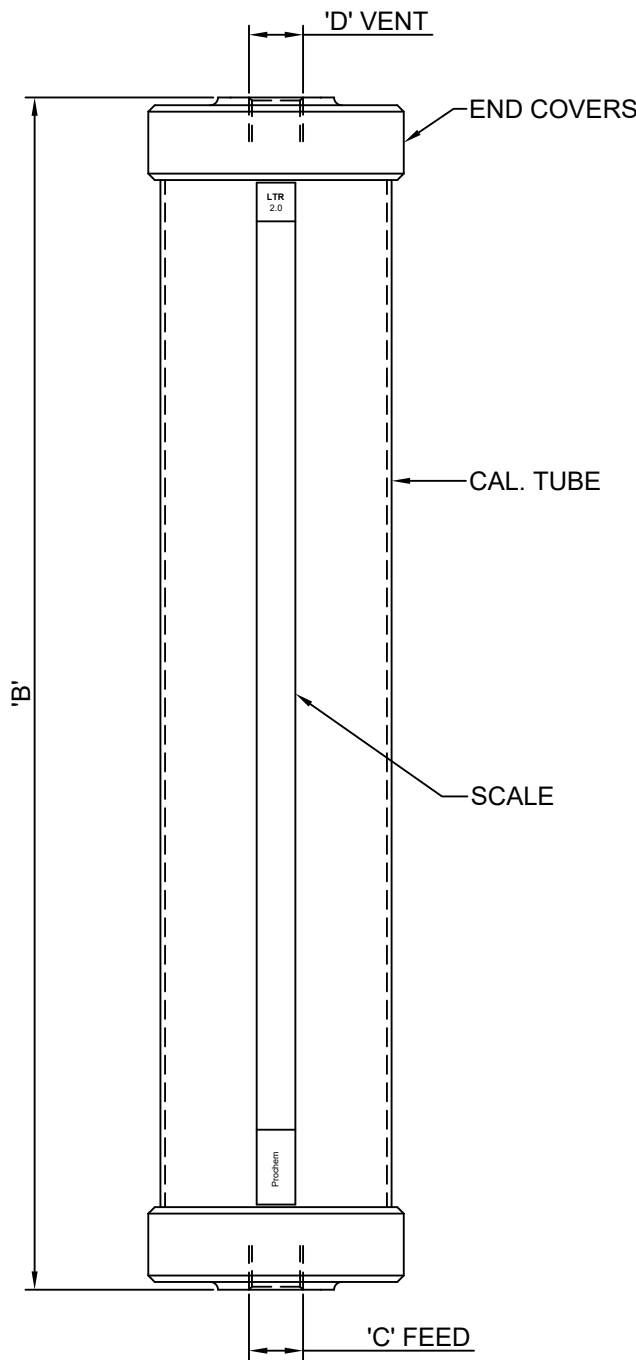
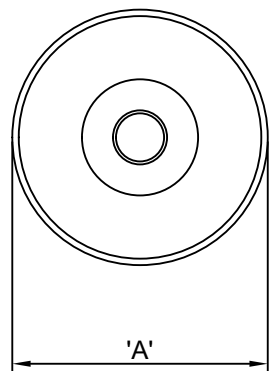


© THIS DRAWING IS THE PROPERTY OF PROCHEM SERVICES AND CANNOT BE REPRODUCED OR USED WITHOUT THE COMPANIES EXPRESS PERMISSION.



CAP LTR	A	B	C	D
0.05	41	207	3/8"	3/8"
0.125	41	348	↓	↓
0.25	49	367	1/2"	1/2"
0.5	49	618		
1.0	73	518		
2.0	99	464		
2.5	99	551		
3.0	99	638	↓	↓
4.0	120	586	1"	1"
5.0	120	701		
7.5	175	541		
10.0	175	677		
15.0	175	949		
20.0	175	1221		
25.0	175	1493		
30.0	175	1765	↓	↓

1. CONNECTIONS ARE BSP PARRALLEL.
2. SCALES ARE ADHESIVE VINYL UP TO 2 LTR. 2.5 LTR AND ABOVE ARE TRAFFOLYTE SCALES. ALL IN CC/LTRS.
3. TOLERANCES ± 2 MM.
4. ALL DIMENSIONS IN MM UNLESS STATED.
5. ALL PVC CONSTRUCTION.
6. VARIANTS OF DESIGN, SIZES, SCALES AND CONNECTIONS ARE AVAILABLE ON REQUEST. E.G FLANGE CONNECTIONS, SOLVENT WELD UNIONS AND DIFFERENT SIZED PORTS.



<b>PROCHEM SERVICES LTD</b> CONGLETON, CHESHIRE, CW12 2AD, ENGLAND	
<b>DRAWING No. PS/00/701</b>	REV 1
SUBJECT <b>PVC CALIPOT OUTLINE BACKBOARD MOUNT DESIGN. 0.05 - 30.0 LTR</b>	

DRAWN	RB	DATE	13.09.12
REV 1	ADDED 0.05 & MATCHED CONNS	REV	
REV		REV	