

## INTRODUCTION

Prochem Calipots are used to confirm correct dosing rates from system dosing pumps. The calibration pot is normally filled to a set level and the dosing pumps then fed from it for a pre-set period - usually one minute. The pumping rate is then checked against the time-calculated flow rate. They are normally a permanent part of the installation and can be supplied with three way valves so that they can be valved in and out of circuit to suit operational needs. Although normally fitted to the suction side of the pump Calipots can be fitted to the discharge side under some circumstances.

## DESIGN

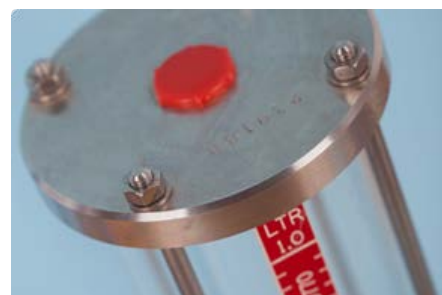
Prochem Calipots are manufactured in PVC end caps and tube. PVC, polypropylene, PVDF, PTFE, stainless steel, or exotic metals with borosilicate glass to suit most liquids. All standard Calipots are designed for atmospheric pressure operation only but higher operating pressure units can be supplied to order. Calipots with design pressures of 11 BarG. have been manufactured by Prochem.



**PVC UNITS** utilize a transparent PVC tube and solid PVC base and top. Two types are available – base mounted and backboard mounted. In both cases the scale is mounted directly on the measuring cylinder. Specials up 75 litre can be manufactured.

### **METAL & OTHER PLASTIC UNITS**

use a rugged precision borosilicate glass measuring cylinder which is clamped between the solid base and top using stainless steel tie rods and 'O' ring seals. The scale is mounted directly on the glass cylinder and protective PVC or mesh shrouds are available as an option for rough or toxic duty applications.



## SIZES & CONNECTIONS

The standard capacities and connections for PVC units are as follows. All units can be supplied with either screwed or flanged outlet connections but non-standard connections such as compression or RTJ can also be supplied. For glass version from 2.5 Ltr upwards connections are 1" BSP feed and 1/2" BSP vent.

| CAPACITY (Ltr.) | 0.12 | 0.25 | 0.5  | 1.0  | 2.0  | 3.0  | 4.0  | 5.0  | 7.5  | 10.0 | 15.0 | 20.0 |
|-----------------|------|------|------|------|------|------|------|------|------|------|------|------|
| CONN. (FEED)    | 1/2" | 1/2" | 1/2" | 1/2" | 1/2" | 1/2" | 1"   | 1"   | 1"   | 1"   | 1"   | 1"   |
| CONN. (VENT)    | 3/8" | 3/8" | 3/8" | 3/8" | 3/8" | 3/8" | 1/2" | 1/2" | 1/2" | 1/2" | 1/2" | 1/2" |

## INSTALLATION

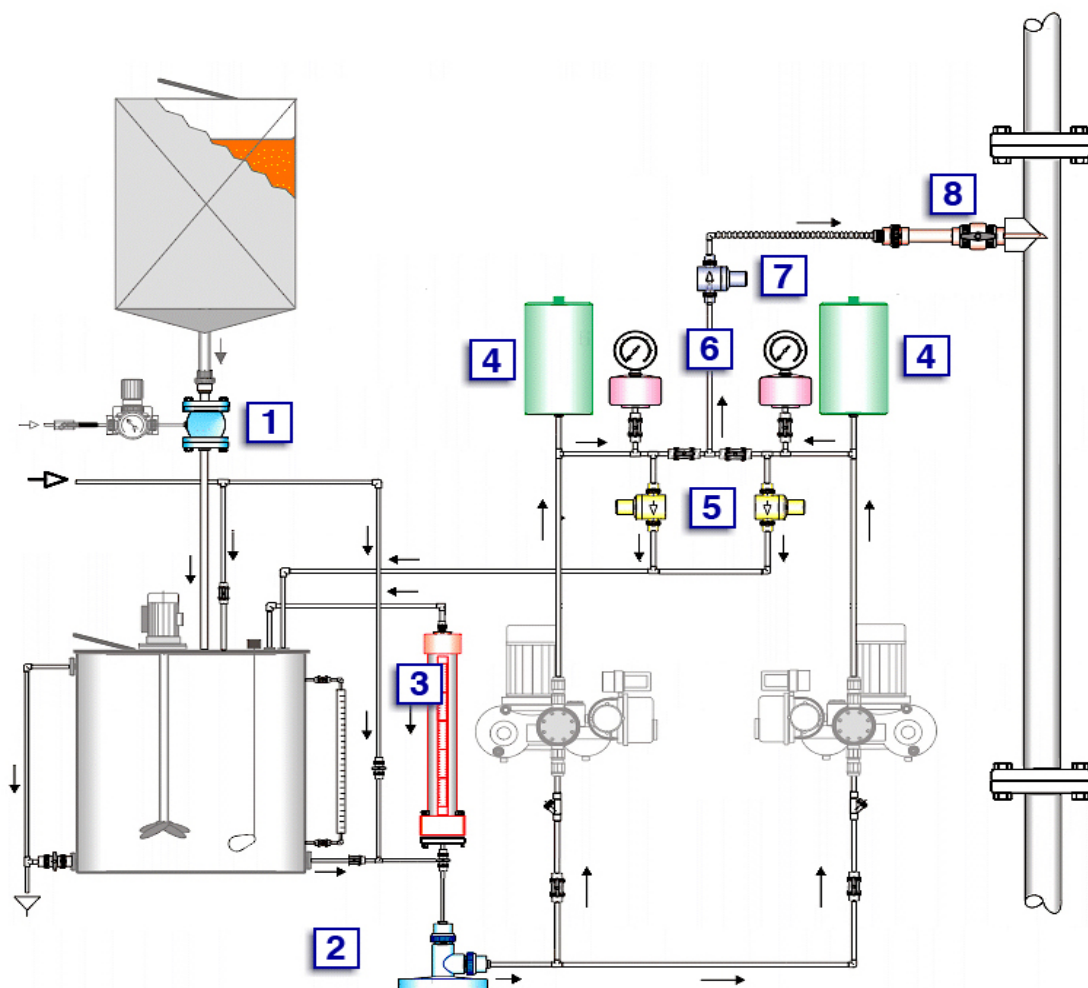
Calipots should be installed as close to the dosing pump as is practical and should be equipped with a three-way valve to enable the pump to be calibrated directly from the Calipot and then switched over to normal direct supply tank feed for full time operation. Care should be taken so that the pump suction cannot be dead headed against the Calipot or an isolation valve as this could cause damage to the pump and/or the Calipot.

## QUOTATION INFORMATION

In order to quote for Calipots we need the following information:

- 1) Size of Calipot required (or pump delivery rate).
- 2) Details of the liquid handled by the system or any preferred construction materials.
- 3) Details of any preferred connection size and type.

## DOSING SYSTEM SCHEMATIC



- 1) Pinch Valve. 2) Suction Demand Valve. 3) **Calipot** 4) Pulstion Damper. 5) Pressure Relief Valve  
6) Diaphragm Seal. 7) Pressure Loading Valve. 8) Withdrawable Injection Lance.